



Sumitomo Drive Technologies

Sumitomo Drive Technologies

Sumitomo Drive Technologies has facilities strategically located throughout the world, providing comprehensive products and services in your region.



- ★ MANUFACTURING HUB
- ASSEMBLY & SERVICE
- ▲ REGIONAL SALES OFFICE

Global Headquarters,
Tokyo, Japan

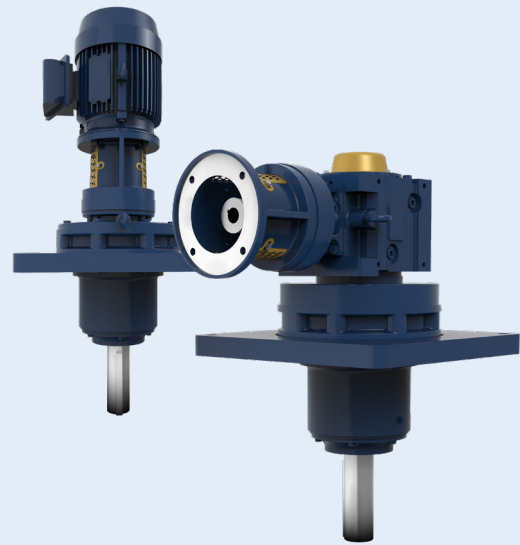
canada.sumitomodrive.com

For worldwide locations, please visit www.sumitomodrive.com/worldwide
Contact your local representative at www.sumitomodrive.com/representative
Tel: 1-844-SM-CYCLO (762-9256)

Food & Beverage



Dependably-Built Low-Maintenance Products For Uninterrupted Operations



CYCLO® Overhead Drive

Unique GREASE-FILLED cyclo transmission uses no gears and has 500% overload capacity.

- 2x competitors overload capacity
- Dimensionally interchangeable with competitor units on request
- C-Face motor adapter options
- 100% grease-filled results in no leakage & long life

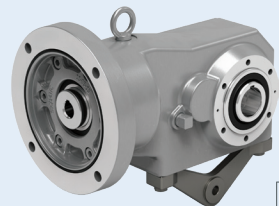
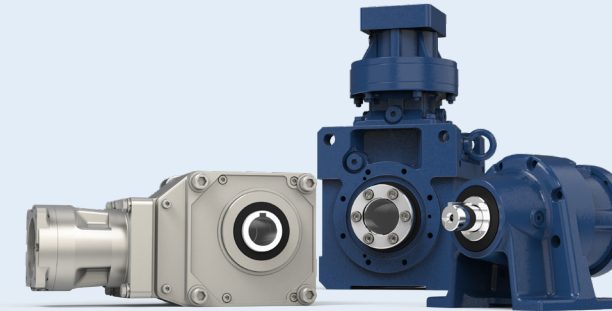
FREEZER DRIVE

- Unique Cam-driven pump to circulate lubrication at -45 °F
- Start and stop operations at full load, thanks to Cycloidal technology's 500% shockload ability.



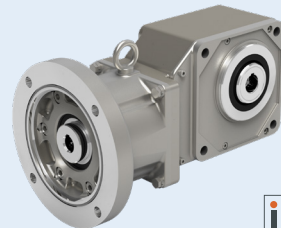
SERVO GEARBOXES

- Lower cost than planetary gearboxes
- Highest acceleration and emergency stop capacity
- Servo Cyclo®, Servo Bevel BuddyBox® and Servo Hyponic® options



FORTRESS®

- Up to 2 HP
- 3/4" to 1-7/16" (Hollow & Solid)
- 7:1 up to 60:1
- Grease-filled



HYPONIC®

- Up to 15 HP
- 3/4" to 2" (Hollow & Solid)
- 5:1 up to 1,440:1
- Grease-filled options



CYCLO® 6000

- Up to 235 HP
- 1/2" to 7" (Solid Shaft)
- 3:1 up to 658,503:1
- Grease-filled options

Quality Food Grade Components



SHIELD360® Protection Packages

Ingress Protection	SHIELD360° Packages
Wash Down IP65	ChemiSHIELD360° *
Food Grade High Pressure Wash Down IP69	UltraSHIELD360° **

* Stainless shafts upon request

** Quill input required

Unique Food Grade IP69 Mechanical Seals

- Antimicrobial FKM material
- Self-contained and self-sealing



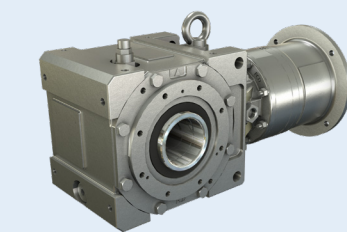
Optional Stainless Steel Motors

- Totally enclosed stainless steel
- Double-sealed ball bearings



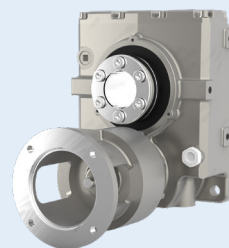
Cycloidal Gearing

- Highest efficiency of all gear types
- 500% shockload



CYCLO® BEVEL BUDDYBOX® 4

- Up to 100 HP
- 1" to 4-15/16" (Hollow & Solid)
- 11:1 up to 26,000:1
- Grease-filled options



CYCLO® HELICAL BUDDYBOX®

- Up to 40 HP
- 1-3/16" to 6-1/2" (Hollow Bore)
- 11:1 up to 26,492:1
- Grease-filled options



SCREW CONVEYOR DRIVE KIT

- Lip seal with adapter
- Double oil seal in gearbox
- CEMA-Compliant shafts



Challenge: Inefficient Gearboxes

- Worm gearboxes have a short lifespan and run hot
- Oil accumulated in the drip pan would splash everywhere during routine washdowns
- Limited 1.5 year life max

Solution: Fortress®

- Efficient Hypoid gearing helps the gearbox run cool
- Maintenance-free synthetic grease eliminates need for oil change
- Cassette-style grease seal keeps leakage at bay for a long lifespan

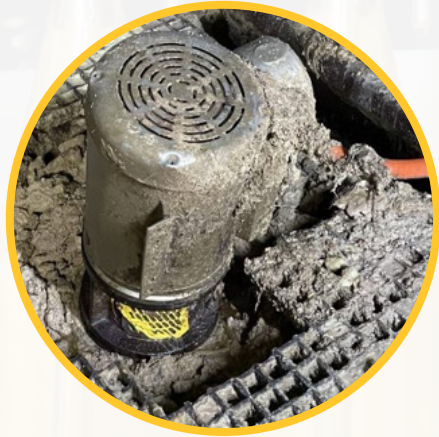


Challenge: Production Downtime

- Frequent failure of input oil seals causes leakage
- Recurring input bearing failure due to the installed belt
- The unit ran hot often, presenting a burn hazard to personnel

Solution: Maintenance-Free Hyponic®

- Maintenance-free grease lubrication keeps the unit running efficiently
- Direct drive design eliminates the need for belts and replacements
- Hypoid gears have less friction and are nearly 40 degrees cooler than Worm geared units



Challenge: Contamination

- Leaking animal by-product contaminate gearboxes
- Constant downtime due to its inability to withstand excessive shockloading
- Constant overheating causing downtime and potential burn hazards

Solution: Bevel Buddybox® Screw Conveyor

- Sealed, grease-filled gearbox with maintenance-free operation
- Overload capacity is 2x more than competitor units due to Cyclo® technology
- Cycloidal gearing offers higher efficiency and cooler operational temperatures



Applications

Packaging

Filling Equipment

Process Conveyors

Palletizers

Process Equipment

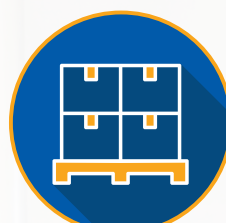
Conveyors

Mixers

Screw Conveyors

Overhead Conveyors

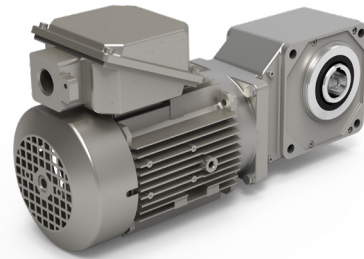
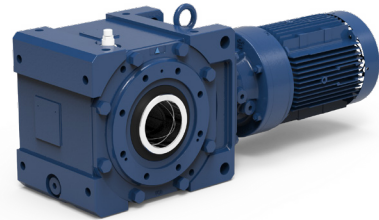
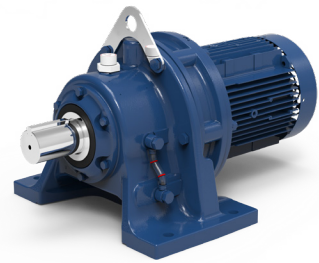
Agitators



Integral Gearmotors

EPNA motors offer excellent performance, long operational lifespan and output seals with the ability to withstand common contaminants.

- UL, CSA, DOE Compliant
- Certified NEMA Premium motors
- IP65 Protection Rating



Condition Monitoring



the **CHECK**
ENGINE LIGHT for
SPEED REDUCERS

It's all about detecting small issues today before they become costly failures tomorrow.



Variable Frequency Drives



- Connection to Rockwell Logix PLC Systems via Ethernet IP
- Rapid commissioning tool with Bluetooth interface
- 200% overload for 4 seconds
- IP66/NEMA 4X-rated enclosures

Centers of Excellence

Our Centers of Excellence offer customers a nationwide support network. From inventory distribution to manufacturing to assembly, we have the team to ensure high quality, responsiveness, on-time delivery, and quick lead times.



Oakville, ON

Assembly, Sales Support
SM Cyclo of Canada, Ltd.'s Headquarters and assembly center in Toronto, Canada, provides a full line of reducers, motors, brake motors and Aftermarket services to the Canadian market.



Surrey, BC

Assembly, Sales Support
Canada's West Coast facility is located in Surrey, British Columbia. This facility provides our full line of products and Aftermarket services for Western Canada.



Chesapeake, VA

Manufacturing, Support, Inventory, and Training
Our Western Hemisphere headquarters has 250,000 sq ft of manufacturing space, and cutting-edge technology. Centralized inventory distribution with a Foreign trade zone (FTZ), focused on inventory optimization, motor assembly, and hands-on training at our Power Institute.



Verona, VA

Industrial Gearbox Production
This purpose-built facility is specifically designed to handle the assembly of our large industrial gearboxes.



Lufkin, TX

Manufacturing and Services
This 32,000 sq ft facility handles gear manufacturing, gearbox repairs, and reverse engineering.



Glendale Heights, IL

Gearmotor Assembly and Support
Houses our state-of-the-art paint system for our SHIELD360® packages for Cyclo®, BuddyBox®, and Hyponic®.

