

Sumitomo Machinery Corp. of America

Headquarters & Manufacturing

4200 Holland Boulevard

Chesapeake, VA 23323

Tel: 757-485-3355

Fax: 757-485-3075

www.sumitomodrive.com

E-mail: marketing@suminet.com

World Headquarters

Japan

Canada

Toronto

Vancouver

Montreal

Mexico

Monterrey

South America

Brazil

Chile

Argentina

Europe

Austria

Belgium

France

Germany

Italy

Netherlands

Spain

Sweden

Switzerland

Asia

China

Hong Kong

Indonesia

Korea

Malaysia

Philippines

Taiwan

Thailand

Other Locations

Australia

India

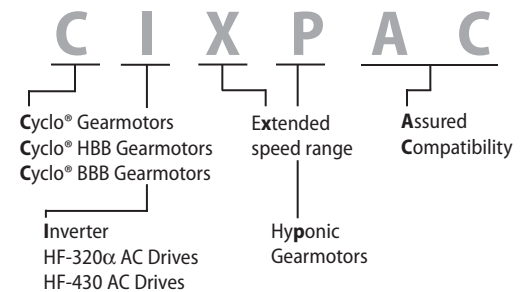
New Zealand

South Africa

CIXPAC

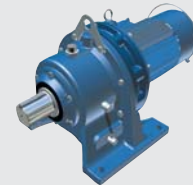
Performance-Matched Sumitomo Gearmotors & AC Drives

- ▶ Performance-matching assures optimum motor to inverter compatibility providing extended speed range
- ▶ Bundled gearmotor/inverter package expands application envelop
- ▶ Premier Cyclo® and Hyponic® technologies extend the package warranty to 2 years for the gearmotors and inverters
- ▶ Sensorless vector inverter provides a wide speed range and high starting torque



Cyclo® Gearmotors

Highly reliable and torque dense, they are the best choice for inline applications requiring minimal downtime, compact size and rugged performance.



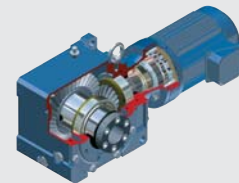
Cyclo® HBB Gearmotors

Cyclo® HBB gearmotors combine the quiet, efficient and reliable performance of the Cyclo® technology input with the rugged helical gear output in an integral shaft-mounted design.



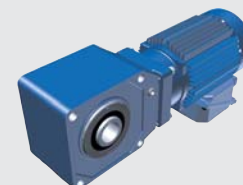
Cyclo® BBB Gearmotors

Cyclo® BBB gearmotors also combine the quiet, efficient and reliable performance of the Cyclo® technology input with the rugged spiral bevel gearbox output in an integral shaft-mounted design.



Hyponic® Gearmotors

Hyponic® gearmotors, with patented, all-steel hypoidal gear technology, are the high efficiency alternative to worm gears for right angle applications. Available in a standard hollow bore configuration with optional plug-in shaft or bolt-on feet.



HF-320α AC Drives

New, sensorless vector AC drives available in a compact, open-chassis (IP20) design with an optional conduit adapter for NEMA 1 applications. Available from fractional through 20 HP in 230V and 460V.



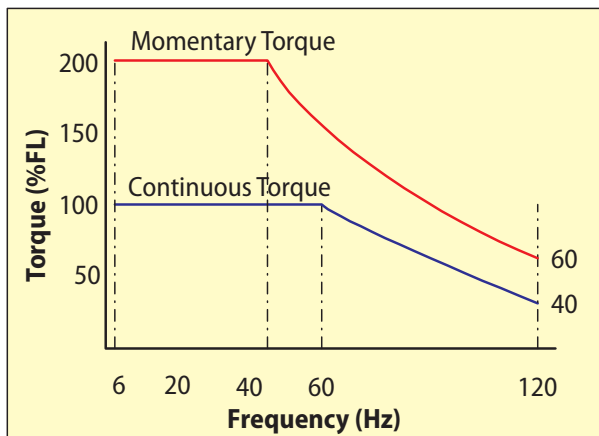
HF-430 AC Drives

Sensorless vector AC drives with optional encoder feedback board for closed-loop vector applications. NEMA 1 enclosed and available from fractional through 75 HP in 230V and 460V.

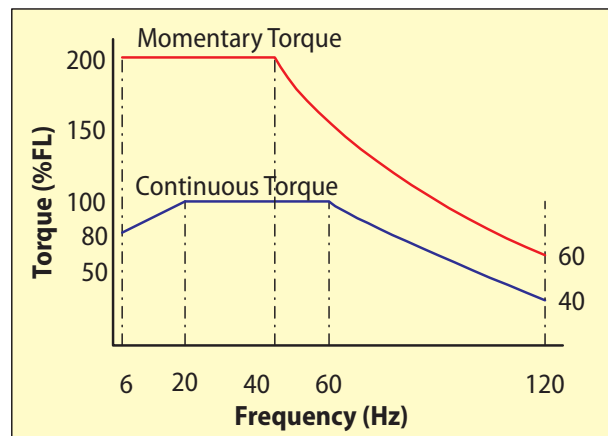


Sumitomo CIXPAC Speed-Torque Performance

CIXPACs are well suited for applications requiring constant torque and constant HP across a wide speed range.



Speed vs Torque 1/4 - 1/2 HP



Speed vs Torque 1 - 30 HP