

Sumitomo Drive Technologies

Sumitomo Drive Technologies

Sumitomo, Hansen and Seisa. Three brands, one global power transmission solutions provider. Sumitomo Drive Technologies has facilities strategically located throughout the world, providing comprehensive products and services in your region.

- ★ MANUFACTURING HUB
- ASSEMBLY & SERVICE
- ▲ REGIONAL SALES OFFICE



Sumitomo Machinery Corporation of America
www.SumitomoDrive.com

For worldwide locations, please visit www.sumitomodrive.com/worldwide
Contact your local representative at www.sumitomodrive.com/representative
Tel: 1-800-SM-CYCLO (762-9256) 01.104.51.001 Fortress Brochure 2018

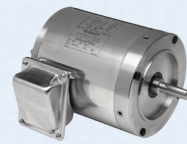
FORTRESS
S T A I N L E S S S T E E L



OPTIONS

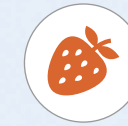


• Shrink Disc



• Stainless Steel Motor

INDUSTRIES



Fruit & Veg



Meat Processing



Pharmaceutical

NEMA QUILL C-FACE

The quill style motor adapter allows for maximum motor flexibility. Supports NEMA 56C, 143TC, and 145TC

HYPOID PINION

Single-piece all steel hypoidal pinion with dual bearing support for longer life. Lasts millions of cycles without measurable wear

COVER PLATE

Precision machined internal surface with seal groove to enhance the maintenance-free sealed-for-life unit

ALL-STEEL HYPOIDAL GEARS

Long-lasting hypoid gear efficiencies up to 93% with smooth and quiet operation

CONTOURED HOUSING

Unique design reduces the build-up of bacteria in those hard to reach areas

CASSETTE SEAL

Antimicrobial FKM Shaft Isolator seal packed with food grade grease and all stainless steel wearing ring and springs

HIGHLY EFFICIENT, GREASE LUBRICATED, COMPACT DESIGN

With over 25 years of hypoid gearing excellence, we are experts in efficiency. Fortress features a compact, modular housing, food grade grease lubrication, and boasts up to **93% gear efficiency**. The IP69K rating also means that it's perfect for harsh, high pressure wash-down environments.

The maintenance-free grease lubrication enables the unit to be mounted in any orientation without custom modifications. Additionally, take advantage of our flange, foot-mount, and torque arm options which drop right in, allowing you to conveniently replace those old, inefficient gearboxes.

Simplify your gear drive assembly, increase your efficiency, and protect your operation by switching to Fortress.



With Sumitomo's all new Fortress gearbox, never worry about paint again. The stainless steel cast 304 housing offers resistance to the most caustic environments and the unique contour design reduces the build-up of bacteria in those hard to reach areas.

Our cutting edge in-house laser etching technology ensures a cleaner finish by eliminating the need for an attached nameplate. This, coupled with our patented hypoid gear technology, means you have a cooler operating, more efficient, cleaner, and maintenance-free operation.

SPECS



HP RATING
1/2 HP to 2 HP
(1.5 kW)



DIAMETER
3/4in to 1-7/16in
(Solid Shaft)

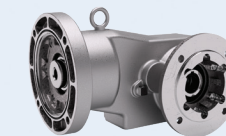


TORQUE
Up to 1,970 lb•n
(223 N•m)

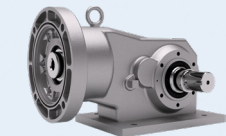


RATIO RANGE
7:1 up to 60:1

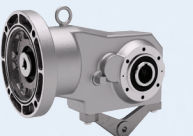
MOUNTING



• Flange Mount



• Foot Mount



• Torque Arm

