



# Sumitomo Drive Technologies



## Sumitomo Drive Technologies

Sumitomo, Hansen and Seisa. Three brands, one global power transmission solutions provider. Sumitomo Drive Technologies has facilities strategically located throughout the world, providing comprehensive products and services in your region.

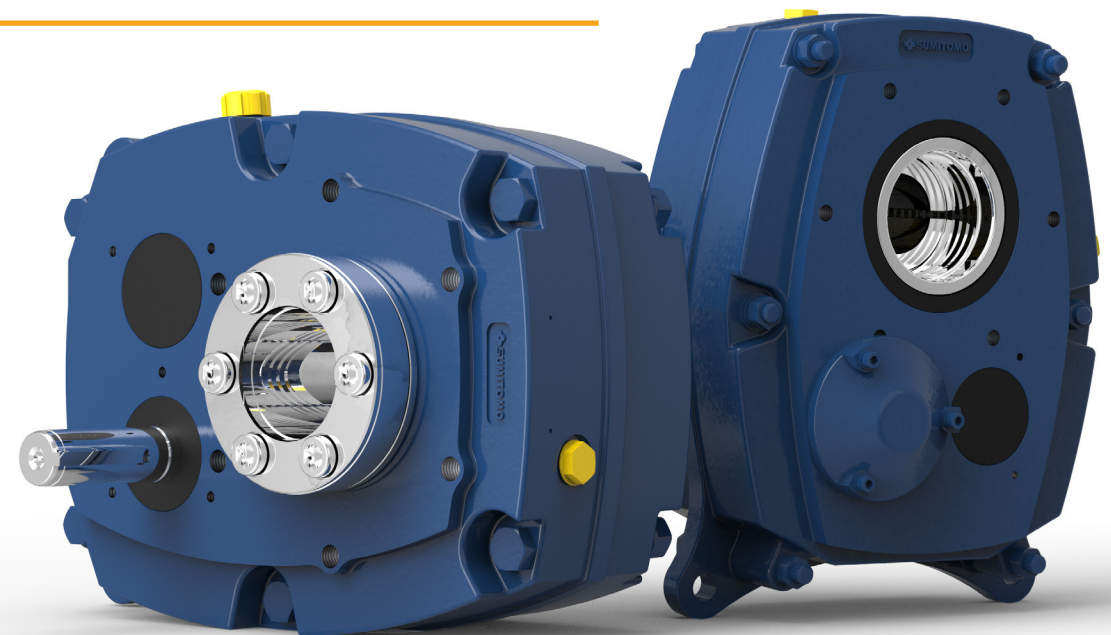


- ★ MANUFACTURING HUB
- ASSEMBLY & SERVICE
- ▲ REGIONAL SALES OFFICE

Sumitomo Machinery Corporation of America  
[www.SumitomoDrive.com](http://www.SumitomoDrive.com)

For worldwide locations, please visit [www.sumitomodrive.com/worldwide](http://www.sumitomodrive.com/worldwide)  
 Contact your local representative at [www.sumitomodrive.com/representative](http://www.sumitomodrive.com/representative)  
 Tel: 1-800-SM-CYCLO (762-9256) 15.001.51.008 HSM Brochure 2019

## HS HELICAL SHAFT MOUNT



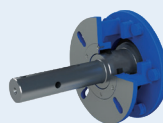
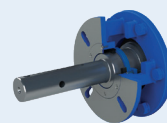
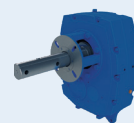


• Taper-Grip® Bushing

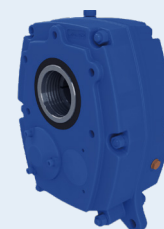
• Screw Conveyor

• Packing Gland

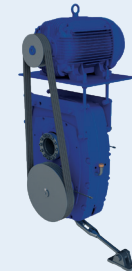
• Lip Seal



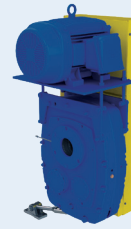
### INPUTS & OUTPUTS



• Backstops  
Easily accessible sprag style



• Belt Drives  
Modern "V" or traditional classic



• Belt Guards  
Expanded metal or polymeric

### ACCESSORIES

### HOUSING

Rugged cast iron housing ensures maximum work life in demanding environments

### TAPERED ROLLER BEARINGS

Oversized and heavy-duty for maximum strength and extended life

### STRONGER GEARS

Hardened, honed and shaved with a 25° pressure angle

### TAPER-GRIP BUSHING®

Offers simple shaft mounting and provides self-aligning, backlash-free torque transmission to the driven shaft

### SEALS

### CARBURIZED GEARING

Strong gear surface and resilient core to maximize shock resistance

## HS HELICAL SHAFT MOUNT

### RUGGED AND RELIABLE WITH ACCURATE GEAR ALIGNMENT

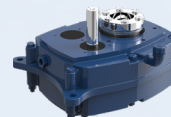
Provides a simple and convenient equipment interface by mounting directly on the drive shaft. Featuring ratios from 5:1 to 25:1 and input power capabilities more than 300 HP. The HSM uses our patented keyless Taper-Grip® Bushing for quick reducer mounting and removal. Robust integrated input shafts and pinions provide durability.

CEMA standard screw conveyor shafts in both two and three hole designs are readily available in both carbon steel and stainless steel. Accessories include Belt Guards, Backstops, Belt Drives and Top Mounts.

### ORIENTATIONS



Horizontal



Vertical



Upright

### SPECS



**HP RATING**  
Up to 300 HP  
(224 kW)



**DIAMETER**  
107 to 608  
(Hollow Bore)



**TORQUE**  
Up to 388,884 lb•n  
(43,938 N•m)



**RATIO RANGE**  
5:1, 9:1, 14:1  
20:1, 25:1