



Sumitomo Drive Technologies

Sumitomo, Hansen and Seisa. Three brands, one global power transmission solutions provider. Sumitomo Drive Technologies has facilities strategically located throughout the world, providing comprehensive products and services in your region.

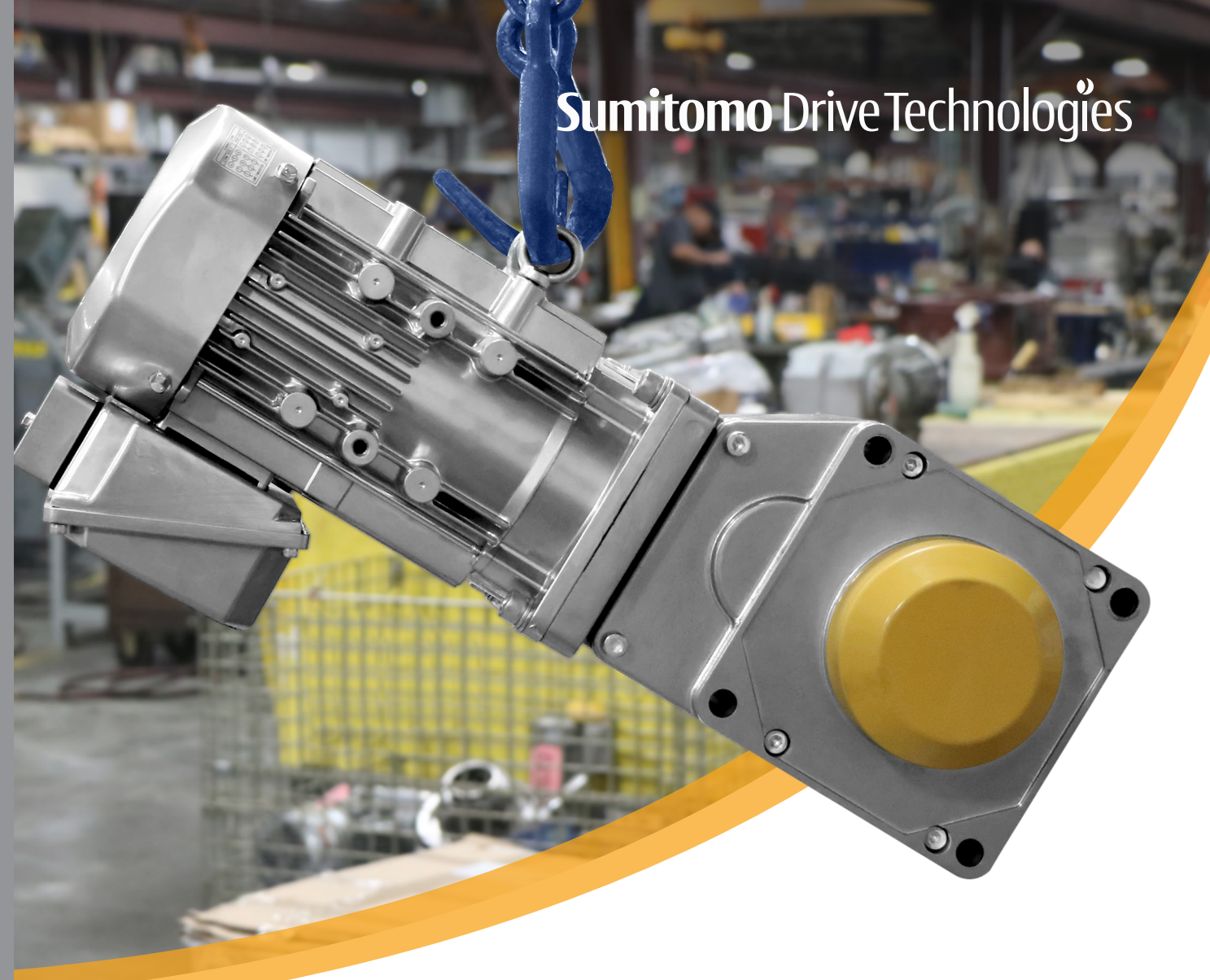
- ★ MANUFACTURING HUB
- ASSEMBLY & SERVICE
- ▲ REGIONAL SALES OFFICE



Configurator
Configure our products to *your* needs.

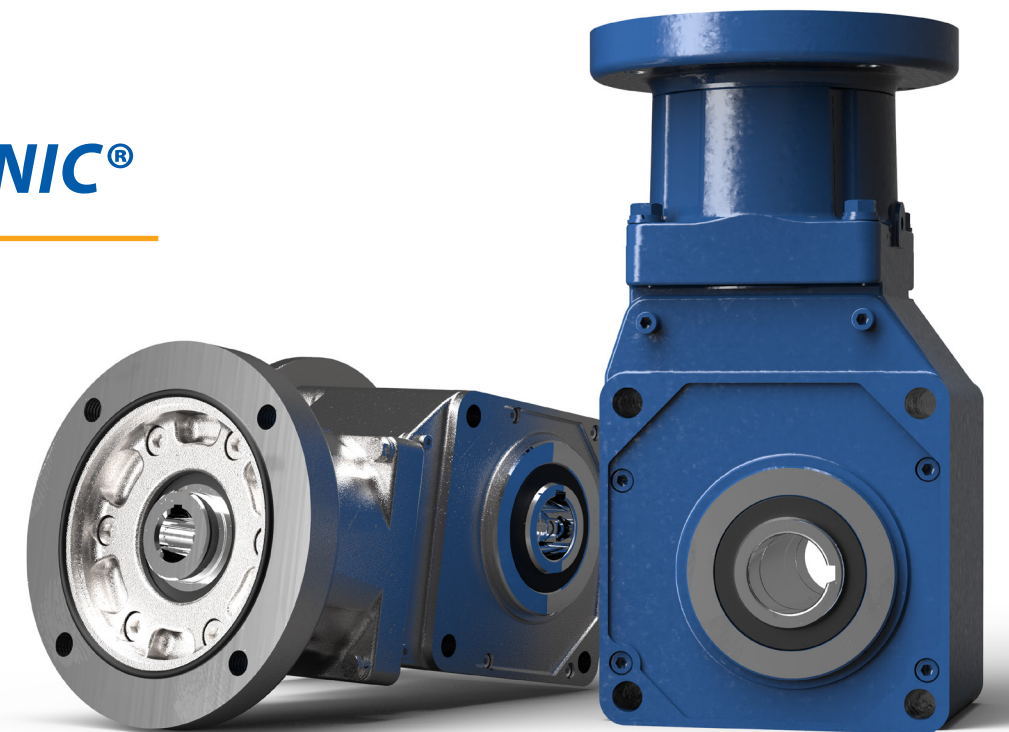
Sumitomo Machinery Corporation of America
www.SumitomoDrive.com

For worldwide locations, please visit www.sumitomodrive.com/worldwide
Contact your local representative at www.sumitomodrive.com/representative
Tel: 1-800-SM-CYCLO (762-9256) 12.001.51.009 Hyponic Brochure 2019



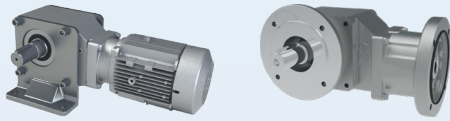
Sumitomo Drive Technologies

H HYPONIC®



• Foot Mount

• Flange



MOUNTING

• Shrink Disc

• Keyed Hollow Bore

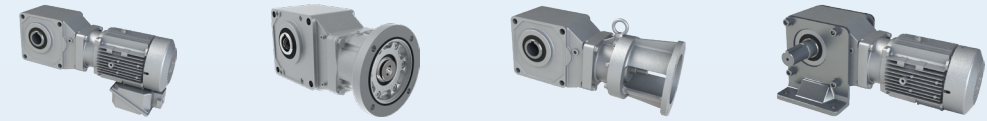


• Integral Motor

• Quill

• Coupled C-Face

• Plug-In-Shaft



INPUTS & OUTPUTS

QUALITY HOUSING

Aluminum housing is lighter and increases thermal rating

SEALS

Multiple lip, harsh duty, and food grade designs available to prevent leaks

DUEL BEARING SUPPORT

HYPOID PINION

Single-piece all steel hypoidal pinion for longer life. Lasts millions of cycles without measurable wear

DUEL BEARING SUPPORT

QUILL O-RING

Prevents water intrusion

C-FACE QUILL

Supported by two bearings for long life, the quill style motor adapter allows for maximum motor flexibility

ALL-STEEL HYPOID GEARING

Patented Hyponic® gear technology is up to 93% gear efficient across all ratios providing a smooth, quiet operation which does not require a cooling fan.



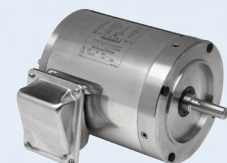
REQUIRES NO OIL CHANGES AND UP TO 93% EFFICIENT

The Sumitomo Hyponic® gearing represents over 25 years of hypoid gearing excellence. With millions of Hyponic® units currently in service, the product features a compact, modular housing, maintenance-free grease lubrication and boasts a gear efficiency of up to 93% across all ratios.

The maintenance-free grease lubrication enables the unit to be mounted in any orientation without custom modifications. In addition to general-purpose solutions, with multiple food grade options, Hyponic® is perfect for harsh, high-pressure wash-down environments.

Simplify your gear drive assembly and increase efficiency by switching to Hyponic®.

OPTIONS



Stainless Steel Motor



SHIELD360® Protection Packages

SPECS



HP RATING
Up to 15 HP
(11 kW)



DIAMETER
3/4in to 2in



TORQUE
Up to 13,100 lb•in
(1,480 N•m)



RATIO RANGE
5:1 up to 1,440:1