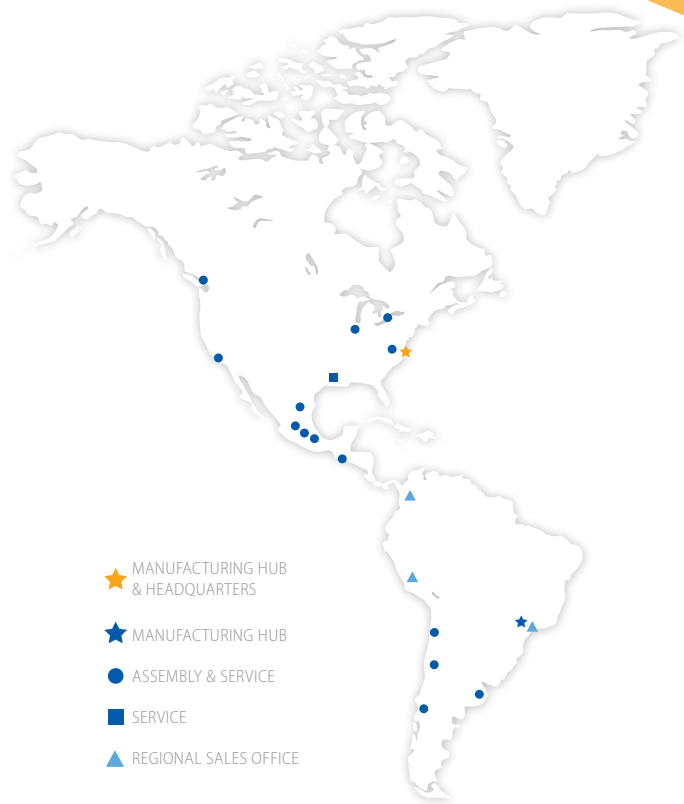




Sumitomo Drive Technologies



Sumitomo Drive Technologies

A global power transmission solutions provider. With facilities strategically located throughout the world, providing comprehensive products and services in your region.

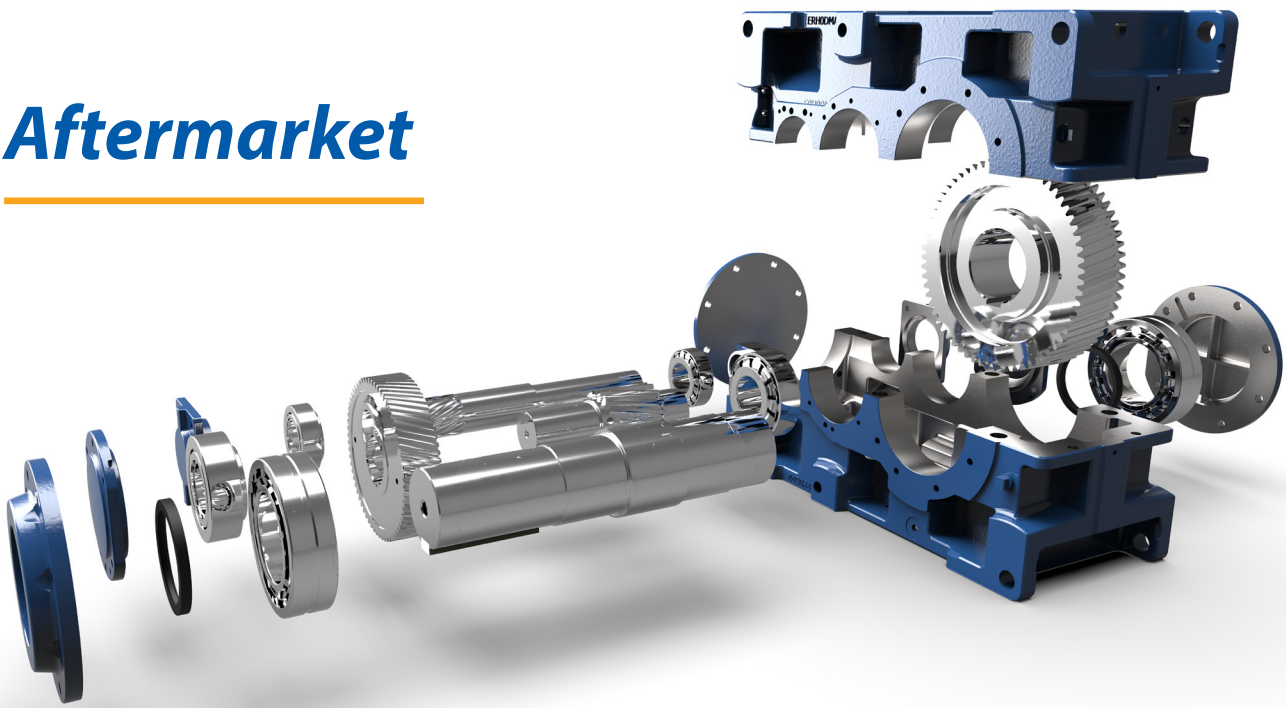
Headquarters



4200 Holland Blvd
Chesapeake, VA 23323

email: SMA.CustomerService@shi-g.com
phone: 757-485-3355

Aftermarket



Our Team of Factory-Trained Technicians has Centuries Worth of Experience.

Connecting You to the Service You Need

Experts in Service

Global Support, Local Service

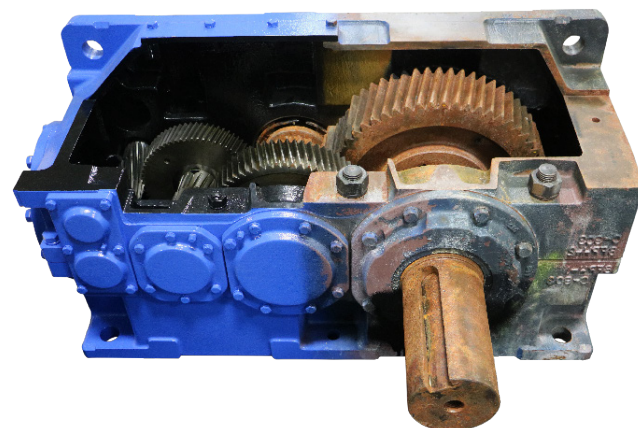
Our personnel are the industry's most versed gearbox problem solvers. We provide both standard and tailored services, for maximum gearbox life.

With a vast network of engineers and gearing experts, there is no problem we can't handle.



In addition to our extensive network, LUFTEX Gears Manufacturing and Services provide unmatched capabilities and expertise in the area of custom gearbox repair and service. With a **60-ton crane capacity and 41 ft hook height**, no gearbox is too big for us to handle.

Whether custom gear manufacturing or on-site gearbox repair, let our team at LUFTEX keep your operation running.



Repairs

Scheduled & Emergency Repair

Repair services for all your related gearbox needs and 24-72 hour turnaround to the original factory specifications and warranty using Sumitomo-manufactured parts.

Extended warranty programs are available upon request.

Root Cause Investigation

Product Support

We'll apply a wide range of approaches, tools, and techniques to uncover the causes of your problems.

Field Services

For Your Convenience

Most of the services offered and customized training can be performed on location.

Service and Industry

Our personnel includes some of the industry's most well-versed gearbox problem solvers. These experts have centuries worth of experience to help with your toughest gearing problems. The Aftermarket team provides both standard and tailored services for maximum gearbox life. We serve a wide variety of industries including (but not limited to) the following:

- Steel
- Sugar
- Chemical
- Water
- Manufacturing
- Mining
- Pulp and Paper
- Power Generation
- Rubber
- Plastics
- Oil and Gas
- Marine
- Cement
- Grain



Flexible Solutions for Your Business Needs

SERVICE SOLUTIONS

- Engineering Design and Analysis
- Reverse Engineering of Customer Components
- Design Upgrade Recommendations
- Disassembly and Evaluation of Gear Units
- NDT Inspections
- Manufacturing of Gear Components
- Full-Service Machine Shop
- On-Site Technical Support for Customer Repairs
- Field Service Rebuilds and Repairs
- Commissioning and Start-Up Services
- Root Cause Investigations
- Condition Monitoring

SUPPORT SOLUTIONS

- Parallel shaft units (All Reductions)
- Right-Angle Industrial (Non Commodity Units)
- High-Speed up to 10,000 ft/min (Pitch Line Velocity)
- Ratings Upgrades 10" CD and Higher (Final Stage)
- All Hansen and Paramax® Reducers Replacement.



We Have the Best Solutions for Your Company With Unmatched Capabilities

Our Aftermarket Provides a Total End to End Service Solution.

Custom Solutions

Our gearing engineers can design upgrade options for existing units to increase performance or design complete custom drop-in replacement units that fit into an existing footprint and envelope.

In Situ Solutions

Our team of experienced technicians and engineers can travel to your location to complete your requested repairs and maintenance. These solutions can minimize downtime and get your operation back up and running.

Repair and Rebuild Solutions

Scheduled or emergency repairs can be completed on time and within budget by our Aftermarket team. Utilizing OEM parts and in-house machining and manufacturing capabilities allows us to meet your needs for a quality and timely repair.

MACHINE SHOP CAPABILITIES

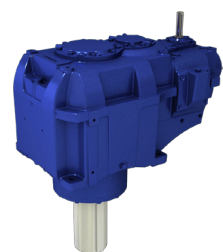
Sumitomo Aftermarket will support repairs and services for all industrial gearboxes ranging from bearing and seal replacements, manufacturing gearing for speed/ratings upgrades to a complete gearbox.

- Parallel shaft units - all reductions
- Right angle industrial, non commodity units
- High speed up to 10,000 feet per minute (pitch line velocity)
- Ratings upgrades 10" CD and higher (final stage)
- All Hansen and Sumitomo Paramax reducers replacement.

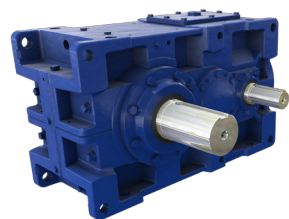
Shop Features

- 1,000 Ton Press
- Tooth Form Grinding
 - Two Hoflers—1.5M (59") and 2.6M (102") OD
- Hobbing for Helical Gearing
 - Two Hofler CNC machines— up to 1.6M (63") OD
 - One CNC Welter Hob up to 5.3M (205")OD
- Herringbone
 - Five Sykes Shaper machines up to 50" OD
 - One 12M MAAG Shaper retrofitted with CNC controls and High Speed Milling
- Internal Splines
 - Two Fellows Shapers machines up to 36" OD
- Horizontal Turning Machines
 - CNC turning up to 35" OD x 130" length
 - Manual Turning up to 43" OD x 300" length
- Vertical Turning Lathe Machines
 - Two CNC machines turning up to 65" OD
 - Manual Turning up to 125" OD
- Vertical Turning Center: 127" X-axis x 55" Y-axis
- OD Grinding: 48" OD x 160" length
- Dynamic Balancing: Up to 10,000 lbs part
- Horizontal Boring Mill: 240" X-axis x 120" Y-axis
- Surface Grinder, Bore Grinder, Keyway Slotter, Radial Drill, Milling Machine
- Crane Capacities:
 - 30 ton and 10 ton in Main Bay One
 - 20 ton in Grinding Room
 - 60 ton and 20 ton in Main Bay Two, 41 ft Hook Height

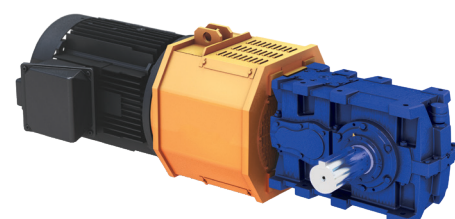
Products Serviced



P4 HANSEN P4



PX PARAMAX® 9000



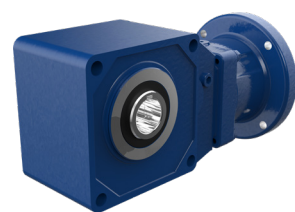
U UNIMINER



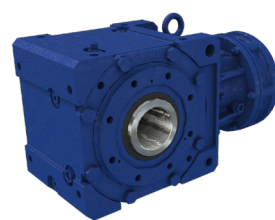
HB CYCLO® HBB



C CYCLO® 6000



H HYPONIC®



B4 CYCLO® BBB 4



B5 CYCLO® BBB 5



HS HSM

We Have You Covered No Matter Your Location.

The Most Reliable and Highest Quality Products Backed by a 400 Year Heritage.

Coast to Coast Support

Chesapeake, VA

Chesapeake is the home of our Western Hemisphere headquarters. This Center of Excellence boasts 250,000 square feet of manufacturing space and cutting-edge technology.

Corona, CA

Our California Center of Excellence is a fully-functioning repair and warranty evaluation center that provides product support to the West Coast. Opened in 1997, Corona manufactures and assembles Cyclo®, BuddyBox®, and Hyponic® products for U.S. customers.

Lufkin, TX

This Center of Excellence in Lufkin has a 60,000 square foot facility that handles gear manufacturing, gearbox repairs, and reverse engineering

With a number of service offerings, including our Ready to Run Cyclo® Program, our facilities can have you back up and running in no time.

Three National Repair Facilities

Corona, CA ★
Small Industrial Gearboxes

Chesapeake, VA ★
Small To Medium Industrial Gearboxes

Lufkin, TX ★
Medium to Large P9/P4
Gear Manufacturing - All Regions
Competitive Industrial Gearbox Repair

Why Sumitomo?

Our 400 Year Heritage

The history of the Sumitomo Group started more than 400 years ago when Masatomo Sumitomo opened a book and pharmacy store in the city of Kyoto, Japan. Today, the Sumitomo Group consists of more than 20 companies who share the Sumitomo Emblem as well as many common values and ideals.

Our Devotion to Quality

In addition to one of the most comprehensive product lines of any power transmission company, we offer the most reliable and high-quality products in the industry. Whether it's product development or manufacturing processes, our quality culture resonates through our entire global network.

We're Committed to our Employees and the Community

At Sumitomo, we recognize our employees as our most valuable asset. They are the driving force behind our innovative products, our ability to support our customers, and our commitment to continuous process improvement. We strive to be a valuable member of society and take pride in the contributions we make to our communities across North and South America.

Dedicated to Innovative Manufacturing

With more than a century of expertise in manufacturing, our global capabilities are unmatched in the industry. We have manufacturing and assembly facilities on every continent and continue to make investments in our manufacturing technologies to maintain our position as a leader in innovation.

