

GET YOUR KIT TOGETHER WITH EASY-GRIP™

3-Part Keyless Shaft Locking System

Easy-Grip™ uses unique interchangeable bushings and a shrink disc set to allow easy attachment of the gear reducers to standard available shafting up to h11 tolerances.

1 Support Bushing

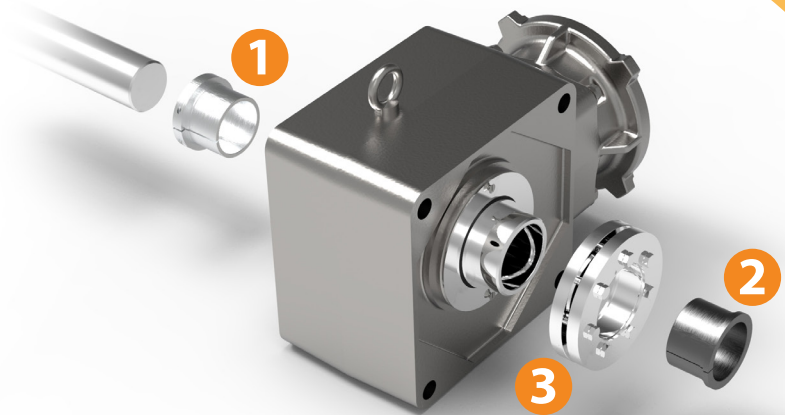
Positions the reducer axially on the driven shaft.

2 Clamp Bushing

Compensates for the space between the gear reducer hollow shaft inner diameter and the diameter of the driven shafts.

3 Shrink Disk

Compresses the hub, clamp bushing and driven shaft to transmit torque.



COMMERCIAL TOLERANCE

Eliminates the need to have precise machining tolerance on the driven shaft, decreasing its cost.



RELIABLE

Tension-optimized and virtually indestructible shrink discs guarantee the highest possible degree of safety.



LESS SPARES

Multiple bushing diameters available for each gear reducer size, reducing spare-part inventory.



EASY INSTALL & REMOVAL

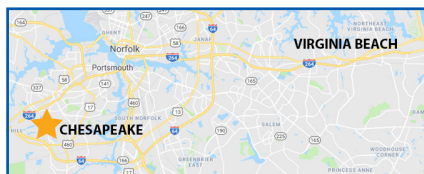
Simple, fast install with no fretting corrosion or surface damage to halt removal of the reducer.



Sumitomo Drive Technologies

A global power transmission solutions provider. With facilities strategically located throughout the world, providing comprehensive products and services in your region.

Headquarters



4200 Holland Blvd
Chesapeake, VA 23323

email: SMA.CustomerService@shi-g.com
phone: 757-485-3355

-  MANUFACTURING HUB & HEADQUARTERS
-  MANUFACTURING HUB
-  ASSEMBLY & SERVICE
-  REGIONAL SALES OFFICE